

ERMINGTON PARISH COUNCIL

The Minutes of Parish Council Meeting held in the Reading Rooms on 21 February 2023 at 7.30 pm

Present: Cllrs Denis Onley (Chair), Robert Owens, Ian Creese, John Dunlop
County Councillor Dan Thomas (from 7.30 pm – 7.50 pm)
District Councillor Tom Holway (from 7.30 pm – 8.00 pm)

Teresa Drew (Parish Clerk and Responsible Financial Officer)

Parishioner(s) / Visitor(s): 4

117/2022 TO ACCEPT APOLOGIES FOR ABSENCE

None.

118/2022 DECLARATIONS OF MEMBERS' INTEREST(S) IN RESPECT OF ANY ITEM ON THIS AGENDA

Cllr Owens listed on the Parish Church electoral roll (see agenda item 13 (a)).

Cllr Dunlop and Creese – re. planning application 3961/22/FUL (see agenda item 11)

119/2022 VACANCIES FOR SIX PARISH COUNCILLORS – TO CONSIDER AND IF AGREED, APPROVE ANY APPLICATIONS RECEIVED FOR CO-OPTION ONTO THE COUNCIL

No applications have been received since the last Parish Council meeting. The notice advertising the vacancies can be seen on parish notice boards, Ermington Parish website and in the Ermington Parish Magazine.

120/2022 REPORT RECEIVED FROM DEVON COUNTY COUNCILLOR DAN THOMAS

The budget was agreed at DCC, it was not easy progress, but the direct impact on communities will be a reduction in the Locality Budget which has been reduced to £5,000.

- *Public footpath gate entrance opposite Plantation House & A3121 Speed limit (variation of DCC policy)* – Cllrs Owens and Thomas had a brief meeting with Mr Paul McFadden, PROW Warden for Devon County Council. Cllr Onley pointed out the hedge needs to be trimmed back to show the gateway to the public footpath opposite Plantation House.

- *Potholes in Westlake and Lusson and flooding in Westlake* – Cllr Thomas has sent a follow up letter to a landowner by Cllr Thomas.

- *DCC Review of Bus services to Ermington* – Cllr Thomas pointed out the bid was not enough for a bus service and there is not enough turning space for a bus. Cllr Thomas is not sure what he can do to make progress this situation.

- *Restricting the times HGV's can use the roads which pass the school entrances i.e. No access between 8am to 9am, and 3pm to 4pm, Mon-Fri during term times* – Nick Colton DCC highways has passed on the information to the policy team.

- *Safety of unusual dips & cambers on new roundabout at Kitterford Cross* – Cllr Thomas has had a meeting with other parishes and the safety audit team has been consulted on the concerns.

Speed limit on the A3121 - Cllr Thomas and Onley attended the Highway and Traffic Orders Committees (HATOC) meeting and have supported the village proposal and the speed limit request is now going to DCC Cabinet. Cllr Thomas requested the report that Cllr Onley gave at the meeting. the RESOLVED to send the report. **ACTION: Cllr Onley / Clerk**

RESOLVED the Clerk to ask for an update on the tree planting near Hollowcombe roundabout, it looks as if weed killer has been used around the saplings. **ACTION: Clerk**

Some positives, but not enough progress say Ofsted inspectors



Ofsted has published its latest monitoring report after inspectors visited our Children's Services.

There has not been enough progress made in key areas since Ofsted's full inspection and some serious issues remain, but there are some positives highlighted in today's report.

You can [read more about Ofsted's report, and our reaction to it, in the story on our news centre at www.devon.gov.uk/news/some-positives-but-not-enough-progress-for-children-in-devon-and-serious-issues-remain-say-inspectors/](http://www.devon.gov.uk/news/some-positives-but-not-enough-progress-for-children-in-devon-and-serious-issues-remain-say-inspectors/).

Levelling up funding announced for projects in Devon

Multi-million pound schemes to improve transport links in Exmouth and Okehampton are among more than 100 projects receiving a share of £2.1 billion through the Government's latest round of Levelling Up funding.

[We've been awarded £15.7 million to complete the Dinan Way link in Exmouth](#), and West Devon Borough Council has successfully received £13.4 million to develop a new railway station on the eastern edge of Okehampton.

The funding for the Destination Exmouth project will enable the completion of Dinan Way link road, helping to tackle congestion and remove traffic from the town centre. The project, which is also supported by East Devon District Council, will improve walking and cycling routes as well as enhancing the town's transport hub.



The West Devon Transport Hub will build on the successful reinstatement of the Dartmoor Line in November 2021. As well as a new station on the outskirts of Okehampton, the scheme will also include cycle facilities and electric vehicle charging points to promote active travel and green travel.

Support for families as food poverty rises



The number of households in Devon unable to access or afford the food that they need to ensure that they and their families stay healthy has increased by 70 per cent in 18 months. And more than a third of households say that they plan to switch off their heating altogether this winter to help make ends meet.

We're working with local partners, including local councils, the NHS and the voluntary and community sector, on ways to support communities, and there are a variety of schemes on offer depending on people's circumstances.

These include the Household Support Fund, Free School Meals and Free School Meals Holiday Voucher scheme, The Holiday Activity and Food Programme and Citizens

Advice Devon.

For more information you can read the full story on the news page of our website, or visit our dedicated [Cost of Living](http://www.devon.gov.uk/cost-of-living/) webpages at www.devon.gov.uk/cost-of-living/.

121/2022 REPORT RECEIVED DISTRICT COUNCILLOR TOM HOLWAY

Cllr Holway Locality funding has now been spent.

Sustainable South Hams is a very good networking group.

Ugborough Parish Council have now got a thermal imaging camera at a cost of £395, which could be available.

Electric vehicle charging survey from SHDC to be completed.

- *Ermington House Nursing Home - complaints regarding external lights* – Cllr Holway is not able to deal with this issue any further.

- *Fume/Air quality test around Ermington Primary School*

- *Re-routing the SHDC Recycling lorries going to and from the overnight parking site next to the Recycling Centre in Ivybridge via the Brown Sign HGV route rather than through the village* – Cllr Dunlop pointed out the situation has improved so therefore it does not require any further action.

- *Ash trees in Ermington Play Park* – a request has been made to Rob Sekula (SHDC) to assess the trees.

Cllr Holway introduced Mr Richard Hosking who will be standing as District Councillor when District Councillor Tom Holway stands down at the May 2023 election. Cllr Onley thanked Cllr Holway for his support during his time as the District Councillor.

122/2022 PUBLIC OPEN FORUM

Mr Richard Hosking introduced himself as the Conservative candidate for the South Hams District Council elections in May 2023.

123/2022 APPROVAL OF PARISH COUNCIL MEETING MINUTES

RESOLVED to approve the Parish Council Meeting minutes of 7 December 2022 (as previously circulated) and Chair Cllr Onley to sign.

124/2022 ERMINGTON CRICKET CLUB PROPOSALS FOR THE PLAY PARK INCLUDING; A CRICKET PAVILION, A CIRCULAR PATH, A BOULE PITCH AND OUTDOOR GYM EQUIPMENT

A parishioner explained the idea that the Ermington and Modbury cricket club who have shared the ground with Ermington since 2019, have for improving the facilities at the play park. See attached.

Apart from a small shed there is no facilities to change, store maintenance equipment etc. at the playing field. The proposal is to have a pavilion with toilet facilities, providing this it could also be used by other groups. Longer-term aspirations will be to improve the facility to an all weather strip.

There will need to be consultation on the ideas. We do not have any assets and could not afford to pursue this. The idea is for the parish council to lease the facilities from SHDC who own the land and have a subcommittee to run it. The cost to be shared to look after the facilities would be met by the council and users.

Cllr Dunlop asked if the clubs had talked to SHDC. A parishioner confirmed they had spoken to Rob Sekula at SHDC.

Cllr Dunlop pointed out that the parish council have not wished to take on the playing field as it will incur cost to parishioners and the Councillors have been trying to reduce the precept.

A parishioner pointed out the cricket club is looking after the inside of field and SHDC would look after the perimeter.

Cllr Owens – the principle will be an enhancement and the need for a pavilion is recognised, as it would enhance the amenities for the village.

Discussion ensued on the cost implications and that parishioners will need to be consulted. RESOLVED for the cricket clubs to discuss which schemes they wish to pursue, which other clubs could use, focusing on the pavilion and where it should be situated.

A parishioner explained how he had dealt with a similar situation when he was a town councillor and that there must be a control on the budget as it can be expensive.

125/2022 RIVER ERME POLLUTION – Cllr Dunlop

South West Water (SWW) have a lot of pending litigation and therefore will not release data requested under Freedom of Information requests. SWW has issued a plan which focuses on the river Teign and Dart.

RESOLVED Cllr Dunlop will respond to the draft South West Water's Resources Management Plan (2024). **ACTION: Cllr Dunlop**

Standing Orders Stood Down – 8.56 pm.

A parishioner had attended both Holbeton and Yealm meetings where South West Water was in attendance. There will be a meeting at Kingsbridge College on 18 March 2023, to discuss the way forward. Run off from sewerage must be separated in any new developments.

Standing Orders Reinstated – 9.00 pm.

126/2022 ERMINGTON ENVIRONMENTAL GROUP – Erme Climate and Biodiversity Plan

RESOLVED that meetings of the group would be held at no hire cost, in the Reading Rooms.

A Locality Grant from Cllr Holway (who will be standing down at the May 2023 election) of £100, will be paid into the Parish Council bank account, pending the opening of the groups bank account (which is in progress). The draft plan was received in December 2022, comments have been fed back to the group by Parish Councillors.

Two parishioners have been put in contact with "Safe Paths For All" group, to try and come up with ideas to enable pedestrians to walk from Ivybridge to Ermington.

127/2022 PLANNING

Reference: 3961/22/FUL

Proposal: Proposal to install Timpson's Pod & 12x Ramraid Bollards

Site Address: Tesco, Central Avenue, Lee Mill Industrial Estate, Lee Mill, PL21 9PE

RECOMMENDATION: Support

Reference: 0065/23/FUL

Proposal: Creation of new agricultural access (resubmission of 2498/22/FUL)

Site Address: Land at SX 605 561, Lee Mill, Ivybridge

RECOMMENDATION: Support

The following planning application was discussed but had not been placed on the Agenda. This meant that any decision could not be final. Deferral to the next meeting would mean that the decision would be outside the statutory time limit for response. The rules allowed the Clerk as the Proper Officer to respond under delegated authority in line with discussions at this meeting. The plans would be placed on 4 April 2023 Parish Council Meeting agenda for ratification.

Reference: 4436/22/FUL

Proposal: Extension of residential curtilage, new garage, fenestration improvements & external alterations to dwelling

Site Address: Waye Farmhouse, Ermington, PL21 9NU

Parish Council being consulted as a neighbouring parish.

RECOMMENDATION: See comment below

See comment -

Ermington Parish Council have declared a climate emergency and under the Natural Environment and Rural Communities (NERC) Act 2006 we are obligated to encourage biodiversity and enhancements for nature. As such we welcome any action that can be taken to help the natural environment and wildlife in this time of climate crisis. Any new planning development offers an opportunity for parishioners to help the Parish Council with this requirement.

We will always assess any proposed planning application in terms of the contribution to climate change.

Steps we wish applicants to take include the following, although this is not an exhaustive list and we would also welcome other solutions:

Incorporating energy efficiency, high standards of insulation, and low carbon systems for heating, cooking and lighting, together with renewable energy generation including PV solar, wind turbines, and electric vehicle charging points.

The use of locally sourced low carbon building materials and the use of building locations and designs to minimise carbon use and include the recovery and reuse of water and building materials.

127/2022 PLANNING (continued)

Ensuring adequate drainage to reduce the risk of flooding and the use of permeable surfacing materials to hard landscape areas. N.B. The use of traditional soakaways in areas of known flooding risk will not normally be supported.

Mitigating carbon use by actions to support wildlife, such as; planting berry and fruit-bearing trees, planting hedgerows instead of fencing, maintaining hedgehog highways, installing bat and bird boxes

Planning Decisions

APPLICATION NUMBER: 3076/22/HHO Ermington	DECISION: Conditional Approval
APPLICATION NUMBER: 3810/22/FUL Ermington	DECISION: Conditional Approval
APPLICATION NUMBER: 3811/22/FUL Ermington	DECISION: Conditional Approval
APPLICATION NUMBER: 3962/22/ADV Ermington	DECISION: Advertisement Consent

Planning Application Withdrawn

APPLICATION NUMBER: 2498/22/FUL 222498 Ermington and Ugborough

To ratify the following planning application recommendation:

Reference: 3508/22/HHO Site Address: Woodcock Barn, Burraton, PL21 9JZ
 Proposal: Householder application for conversion of existing garage to habitable room, link extension to connect to existing property & addition of PV panels

Recommendation: No comment - Ermington Parish Council have declared a climate emergency and under the Natural Environment and Rural Communities (NERC) Act 2006 we are obligated to encourage biodiversity and enhancements for nature. As such we welcome any action that can be taken to help the natural environment and wildlife in this time of climate crisis. Any new planning development offers an opportunity for parishioners to help the Parish Council with this requirement.

We will always assess any proposed planning application in terms of the contribution to climate change.

Steps we wish applicants to take include the following, although this is not an exhaustive list, and we would also welcome other solutions:

Incorporating energy efficiency, high standards of insulation, and low carbon systems for heating, cooking and lighting, together with renewable energy generation including PV solar, wind turbines, and electric vehicle charging points.

The use of locally sourced low carbon building materials and the use of building locations and designs to minimise carbon use and include the recovery and reuse of water and building materials.

Ensuring adequate drainage to reduce the risk of flooding and the use of permeable surfacing materials to hard landscape areas. N.B. The use of traditional soakaways in areas of known flooding risk will not normally be supported.

Mitigating carbon use by actions to support wildlife, such as; planting berry and fruit-bearing trees, planting hedgerows instead of fencing, maintaining hedgehog highways, installing bat and bird boxes.

Appeal Start Notification Letter:

3018/22/HHO 2 Erme Bridge Cottages, Ermington, PL21 9NN

128/2022 FINANCE

RESOLVED to agree the following:

(i) Bank balances – Business Account on 9 December 2022 = £45,947.72
 Treasurers Account on 13 January 2023 = £71,670.93

(ii) Receipt – Bank Interest (Business Account) 09/12/2022 = £10.51
 09/01/2023 = £19.64

(iii) RESOLVED to make the following payments:

Description	Gross	VAT	Net
Parish Clerk – January 2023 salary	£721.20	-	-
DB Computer Repairs – December 2022 & January 2023 maintenance charge for parish council website	£80.00	-	-
Parish Clerk – December 2022 salary	£721.20		
Futureclient Ltd – Caution Pedestrians in Road signs x 2 and clamps	£171.60	£28.60	£143.00
Source for Business – water at Reading Rooms 4 August to 30 November 2022	£41.64	-	-
Dart Fire Protection – servicing of the Reading Rooms fire extinguishers	£135.42	£22.57	£112.85
Source for Business – water at Reading Rooms 1 December 2022 – 1 February 2023	£19.37	-	-
eDF– air ambulance lights, playing fields, Ermington	£24.67	£23.50	£1.17
Cllr Denis Onley – South Hams Highway and Traffic Orders Committees mtg at Follaton House, Totnes – mileage and printing costs	£45.49	-	-
ADS 4 x replacement double glazed windows for the upper room – deposit paid of £1586.52	£4,759.49	£1057.67	£3701.82

(iv) Grant Request – Grant Request – Ivybridge Ring and Ride – RESOLVED to grant £100 **ACTION: Clerk**
 South Hams Community Voluntary Services – RESOLVED not to give a grant.
 Ermington Village Fund- Parish Council to take over the ongoing maintenance costs (£135 approx.) of the new defibrillator for Ermington Hub/Cafe – grant request withdrawn.

(v) RESOLVED to approve the Financial Statement and Earmarked Reserves

Financial Statement

Lloyds Bank Business Account bank statement as at 9 December 2022:		£45,947.72
Lloyds Bank Treasurers Account bank statement as at 23 January 2023:		£71,670.93
Less: any un-presented cheques		£0.00
Plus: any un-banked cash/cheques		
	001514	-£40.00
	001529	-£40.00
	001530	-£135.42
	001531	-£24.67
Total Funds =		£117,378.56
Earmarked Reserves		
Repairs to Reading Rooms, Ermington		-£20,000
Total uncommitted Funds =		£97,138.47

(vi) Spend and income against budget 2022/2023 to date was reviewed.

(vii) Acknowledgement has been received for the compliance with the registration requirements from the Pensions Regulator.

129/2022 REPORTS ON ALLOCATED AREAS OF RESPONSIBILITY:

(a) Church Liaison = Cllr Owens – the path to the Reading Rooms has been discussed with the Churchwardens, but there is no funding available from the church. Litter pick in the village today, Spring watch to take place in the churchyard.

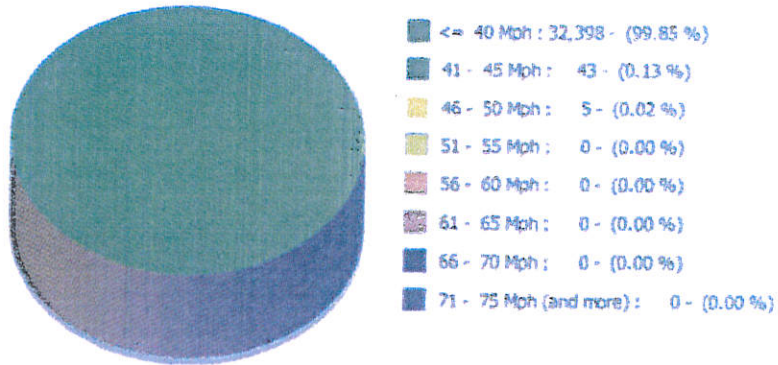
(b) Ermington Park = Cllr Onley - Skate Park, coaching and workshops for young people. Landmark tree has been received from Devon Wildlife Trust which will be planted in the playing field.

(c) Climate Change and Biodiversity = nothing to add

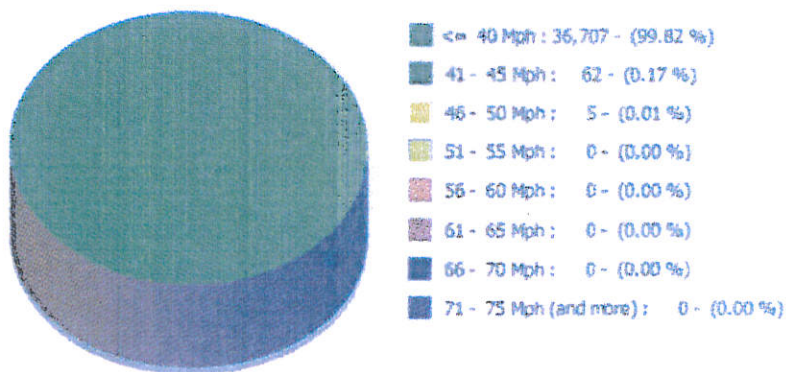
(d) Road Warden Scheme = Cllr Creese – the speed camera located near Fawns Bridge has been in operation and data has been uploaded by Cllr Creese. The reading are as follows:

Camera at Fawns Bridge
Ermington
A3121

West bound vehicles since January 2023



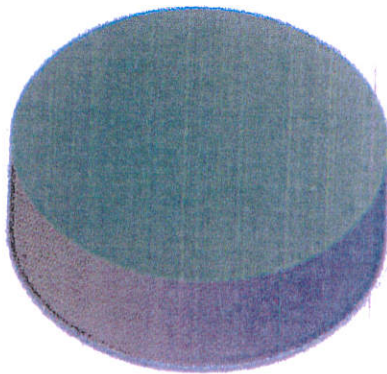
East bound vehicles since January 2023



**Camera at Fawna Bridge
Ermington
A3121**

West bound vehicles February 1st - 14th 2023

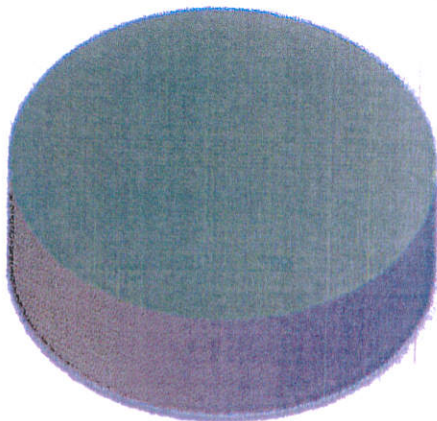
Incoming vehicles



<= 40 Mph	12,146	(99.83 %)
41 - 45 Mph	19	(0.16 %)
46 - 50 Mph	2	(0.02 %)
51 - 55 Mph	0	(0.00 %)
56 - 60 Mph	0	(0.00 %)
61 - 65 Mph	0	(0.00 %)
66 - 70 Mph	0	(0.00 %)
71 - 75 Mph (and more)	0	(0.00 %)

East bound vehicles February 1st - 14th 2023

Outgoing vehicles



<= 40 Mph	13,706	(99.75 %)
41 - 45 Mph	32	(0.23 %)
46 - 50 Mph	3	(0.02 %)
51 - 55 Mph	0	(0.00 %)
56 - 60 Mph	0	(0.00 %)
61 - 65 Mph	0	(0.00 %)
66 - 70 Mph	0	(0.00 %)
71 - 75 Mph (and more)	0	(0.00 %)

129/2022 REPORTS ON ALLOCATED AREAS OF RESPONSIBILITY: (continued)

(e) Assessment of Parish footpaths = Cllr Owens – path immediately through the gate opposite Plantation House to the does not have a good camber for walker. A footpath from Modbury to Ermington is being discussed with P3 coordinators from Modbury. Cllr Owens would like the parish council to write to Modbury parish council asking for the installation of a new path. **ACTION: Clerk**

A meeting has been arranged with Ros Davies DCC P3 coordinator in March 2023, to discuss the Modbury to Ermington and Higher Keaton to Fernham possible footpaths.

(f) Footpath from Higher Keaton to Fernham = Cllr Owens – application still not submitted for definitive map modification order.

130/2022 CORONATION OF KING CHARLES III – SATURDAY 6 MAY 2023

If any parishioners have an idea to celebrate the coronation, please contact a Parish Councillor or Clerk.

131/2022 PORTABLE APPLIANCE TESTING OF EQUIPMENT IN READING ROOMS

RESOLVED the Clerk to arrange testing. Maximum cost of £100. **ACTION: Clerk**

132/2022 CORRESPONDENCE TO NOTE

Some of the correspondence listed below can be viewed on the parish website: -

- DCC - Temporary Traffic Notice - WILBURTON CROSS TO BURRATON CROSS ALONG ZC199, Ermington (TTRO2348588)
- SHDC - Encouraging residents to sign up for our garden waste service by 22 January.
- SHDC - Become a District Councillor at South Hams and Make a Difference for the Future
- SHDC - Council using funds to support households in the South Hams
- SHDC - South Hams Council Tax Reduction scheme designed to help more people than ever.

133/2022 TO CONFIRM DATE OF THE NEXT PARISH COUNCIL MEETING AND VENUE

The next Parish Council Meeting will be held in the Reading Rooms, on [4 April 2023](#) starting at [7.30](#) pm.

Meeting closed at 10.10 pm.

Denis Onley

.....
(Ermington Parish Council Chair)

Date: 4 April 2023

Agenda and minutes can be viewed on the Ermington Parish website

<http://www.ermingtonparish.com/parish-council/archives>

To report highway issues - <https://www.devon.gov.uk/roadsandtransport/report-a-problem/>

SHDC website to report issues - <https://apps.southhams.gov.uk/webreportit>



3rd January 2023

Everyone Can Play - Ermington Playing Field

Proposal for the improvement of sport and exercise facilities at Ermington Playing Field

- Overview
- Background to use of playing field
- Present user groups
- Proposed improvements to the playing field
- Resources required and the associated costs
- Priorities
- Proposed funding sources
- Management & review
- Summary



Overview

The overall focus of this vision for Ermington Playing Field is to create a facility that is both central to the village and that will promote healthy living opportunities for everyone resident in Ermington and the immediate surrounding area. It will capitalise on the site's burgeoning success as a cricket ground, consolidate and improve what currently exists, whilst adding modest improvements to both enhance the cricket experience and widen the opportunities for further recreational use of the site.

This vision is not meant as a final picture for the field, but it does represent a realistic view of what could be achieved in the short to medium term. As such it will address some clearly identified shortfalls in the site as a cricket venue, provide facilities that open the site for wider recreational use across the local community and provide a solid foundation upon which to base any future plans, however and whenever these emerge.

It has been created by a small team comprising representatives from both Ermington Cricket Club and Modbury Cricket Club, the two resident cricket clubs on site. It has been produced with a primary focus on working with the local community to grow

cricket and the opportunities for the local community to enjoy and benefit from cricket at Ermington Playing Field.

Background to the use of playing field

The playing field is a public open space owned by the South Hams District Council. It is the only recreational area in the village and as such is used by the community of Ermington for casual outdoor play, occasional community and school events and, with its adjacent riverside walks, as a popular spot for exercising dogs.

Since the formation of Ermington Cricket Club in 1993, the field has been used to host summer cricket matches, with a gap of 3 years between 2016 and 2019 due to the loss of the volunteer groundsman needed to generate and maintain the playing surface,

In 2019, a joint venture between Ermington and Modbury Cricket Clubs has successfully revived cricket on the ground, with a small team of volunteers preparing and maintaining a 4-track cricket square with the aid of some limited cricket club owned resources and able to mow the cricket outfield via a machinery sharing arrangement between Modbury Cricket Club and Modbury's Recreation Ground. This work was recognised in the 2021 South Hams District Council's Playing Field Strategy, which identifies Ermington as a cricket ground in need of further improvement and additional facilities.



Present user groups

The field is used by Ermington and Modbury Cricket clubs, both are members clubs and affiliated to the Devon Cricket Board. Ermington CC play the majority of their matches as mid-week evening games, whilst Modbury CC play Sunday afternoon cricket. Neither club plays league cricket, with the current emphasis on social cricket.

Primarily due to the lack of facility, neither club is currently able to provide junior age group or specific female cricket. The joy of social cricket however is that anyone can take part from 13 years of age and both clubs regularly field mixed teams, including youngsters of 13+.

The cricket clubs have a small block work shed in which is kept various cricket paraphernalia and ground works equipment. The site has a recently installed mains electricity supply to support its role as a designated night-time landing site for the Devon Air Ambulance and the field is crossed by a range of mains water and wastewater services. At the west end of the field is an impressive recently re-equipped children's play area and an older tarmac skate park.

The field is used for casual recreational activities by residents and visitors alike, as well as dog walkers. On one side of the field is a tarmac path and on two of the other sides is a narrow gravel path. There are three benches around the perimeter of the field.

Proposed Improvements to the Playing Field

The primary objective of the improvements is to extend the age range and numbers of participants involved in the two cricket clubs by extending and enhancing the facilities at the playing field.

An additional objective of this proposal is to make the site more useable, more welcoming and more exciting for a wider range of the local community. By focusing this effort initially on the facilities needed for cricket, the project looks to add facilities with immediate utility and considerable potential for much wider use.

The vision is for a cricket led focus on the encouragement and involvement of younger members of the community (girls and boys), whilst at the same time, improving the quality of provision for all participants.

As in most small rurally based communities, there are limited opportunities in the village for young people to be involved in organised team activities and the associated benefits of the social interaction and physical well-being that is gained through participating in these activities. Opportunities for young people in both Ermington and Modbury to access cricket facilities elsewhere are limited and not open to all, owing to the cost and travel issues.

Accordingly, the first stage in this vision is to improve the facilities to enable the extension of the cricketing opportunities, whilst embracing the opportunities these improvements bring for their wider use. Stage two is to consider further phased additions and improvements to the facilities available for cricket, recreation and wider play on the site.

The provision of a clubhouse/ pavilion with changing and toilet facilities are the most important initial developments, alongside an improvement in the quality of the playing surface.



Over the past few years, the playing surface of the cricket square has been restored by members of the cricket clubs giving of their time, experience and initiative as an addition to the site maintenance provided by South Hams Council. Without this additional input, summer grass lengths would make it impossible to host any organised sport or provide anything but a venue for the most basic of casual play.





A powered cricket pitch roller, a multi-purpose combined green keeper mower and scarifier are essentials to enable the preparation of a safe and good quality playing surface. Whilst the cricket club currently owns an elderly but working green keeper mower, all other machinery is currently accessed through goodwill and luck.



At present there is no shelter for the players. If it rains their personal belongings are exposed to the inclement weather. The only place to shelter and get changed is under the trees. Participants need a pavilion/ clubhouse in which to change and shelter. Additionally, the building would provide a base from which to deliver coaching information for juniors. A water supply will be essential in order to provide basic refreshments and for first aid. A toilet (unisex and disabled access) on site is also essential, with the closest

public facility in the centre of the village, at least a ¼ mile away. This clubhouse/pavilion would be sited on the north side of the playing field (see attached plan), adjacent to the existing store shed.

It is foreseen that the pavilion could be used by a range of organisations such as; a coaching room for young people participating in 'All Stars' cricket scheme, a classroom area for pupils from the school using the field for a range of activities, a facility for events organised by the village fund such as the annual summer fair, and a valuable support base to events such as the school sports day.

The provision of an all-weather cricket strip and a practice net would extend the opportunities for playing, coaching and practice. (For example, the England and Wales Cricket Board 'All Stars' coaching scheme for juniors).



Boules (Pétanque) is a game enjoyed by all ages and a Boules court would provide a very



effective focus for family and wider social interaction across the entire community. Installing such a facility, complete with wheelchair and push chair access, in the shaded, grassy area between the play park and skate park would prove a quick, relatively easy and very cost-effective investment in the site and would prove extremely popular with residents and visitors across all ages and ranges of physical mobility.

The perimeter of the playing field is currently used by walkers and joggers. The provision of a more substantial path of crushed gravel, completely enclosing the perimeter of the cricket field would widen this, enabling use by pushchairs and children on bicycles etc. Given the lack of pavement and volume of traffic passing through the Village's narrow streets, such a path would offer a safe and effective exercise opportunity. A logical follow-on step would be to add a simple circuit of exercise stations outside the perimeter path. These stations can start simple and be updated and enhanced as time, funds and demand allows.



Resources required and the associated costs

The following costs are estimates based on provisional research. Whilst they are not accurate final figures they have been obtained through contact with established suppliers and via published lessons learnt from similar projects. Accordingly, they provide sensible planning figures and provisional targets but remain subject to review and refinement as and when any element of the proposal progresses.

	PHASE 1
Pavilion + base (including toilets)	£30,000
Ground maintenance equipment: -	
Powered roller	£10,000
Powered mower/scarifier	£11,500
Water/ electricity/ sewage supply to pavilion	£7,500
All weather cricket strip	£10,200
Cricket practice net	£3,500
Construction of pathway around the field	£28,000
Construction of a Boules (Pétanque) court	£4,000
Exercise stations by perimeter path	£8,500
TOTAL	£113,200

Priorities

1. Pavilion + toilet
2. Ground maintenance equipment (roller and scarifier)
3. Construction of path around perimeter of field
4. All weather cricket strip
5. Boules court
5. Exercise stations
6. All weather cricket strip
7. Practise nets

Funding sources

- Grants

- Donations – financial and in-kind
- Fundraising activities
- Voluntary assistance
- Fundraising activities

Management & Review

The site is currently owned by South Hams District Council (SHDC), and it is understood that the site was originally acquired for public sport and recreation and remains exclusively reserved for such use in perpetuity.

A possible model for the future of the site would be its ownership by Ermington Parish Council on the behalf of the Ermington community and with its day to day management delegated to a Parish Council Sport and Recreation sub- committee drawn from representatives of user groups and stakeholders, overseen by the Parish Council. This Sport and Recreation Association could coordinate the maintenance of the site and facilities and its use by



organised groups. It would keep the site under regular review and actively encourage further additions and improvements where the need and demand are identified. It would take the lead in any associated fund raising required

Establishing the exact ownership and management model for the site and/or the pavilion and /or other facilities would be one of the early outputs of any further planning should this proposal be progressed.

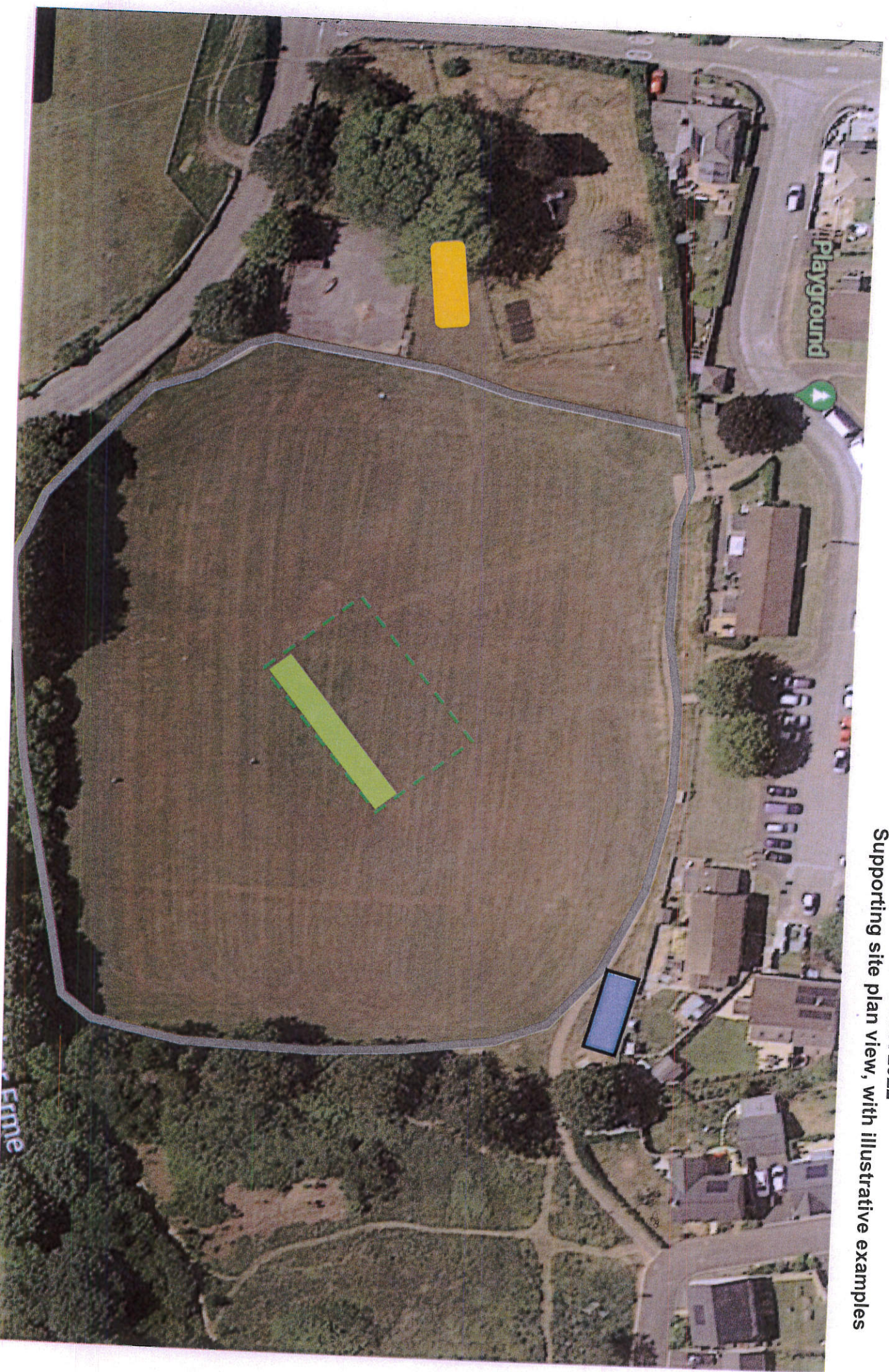
Summary

The provision of a pavilion, enhancement of the playing surface and the extending of the range of the facilities provided at the playing field would play an important role in the extension of the recreational opportunities for members of Ermington village community and visitors.

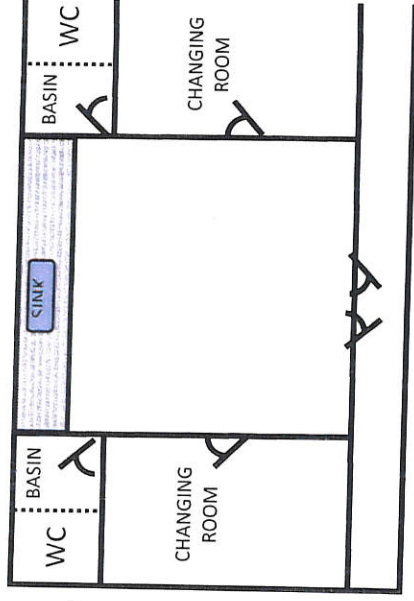
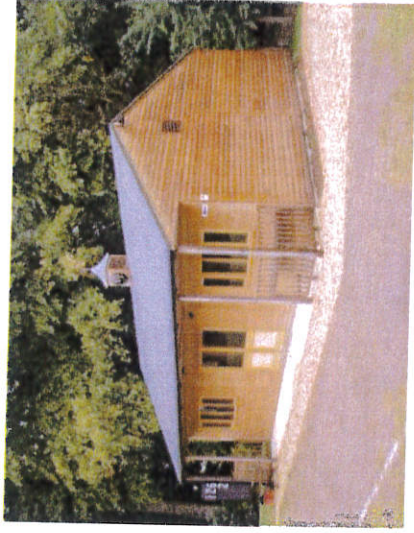
This proposal represents a vision for what the site could offer for only a reasonably modest outlay and fundraising effort. In laying it out, the immediate needs and priorities for the site have been identified and these build on SHDC's own stated aspiration for the site to be enhanced as a cricket field. The overwhelming focus is on making the site more widely available across the community, more welcoming to those using the site and with a dramatically enhanced flexibility able to support the Ermington community across a whole spectrum of established and potential activities.

It is submitted, initially to the Parish Council and subsequently to the wider community and Local Authority, with the recommendation that it be endorsed and adopted as a project worthy of taking forward.

APPENDIX 1 TO
A FIELD FOR EVERYONE
DATED 15 DECEMBER 2022
Supporting site plan view, with illustrative examples



Proposed new 12.6m x 7.2m clubhouse.
 Exact location to be decided between
 above existing path alongside existing
 machinery shed or below existing path
 alongside existing Devon Bank



Existing cricket square provide 4
 cricket wickets to be used in rotation,
 one wicket to be all-weather



Metalled path, wheelchair, pushchair
 and bike friendly to provide full
 circuit of field perimeter. In time,
 fitness stations could be added



Boules (Petanque) Court

